

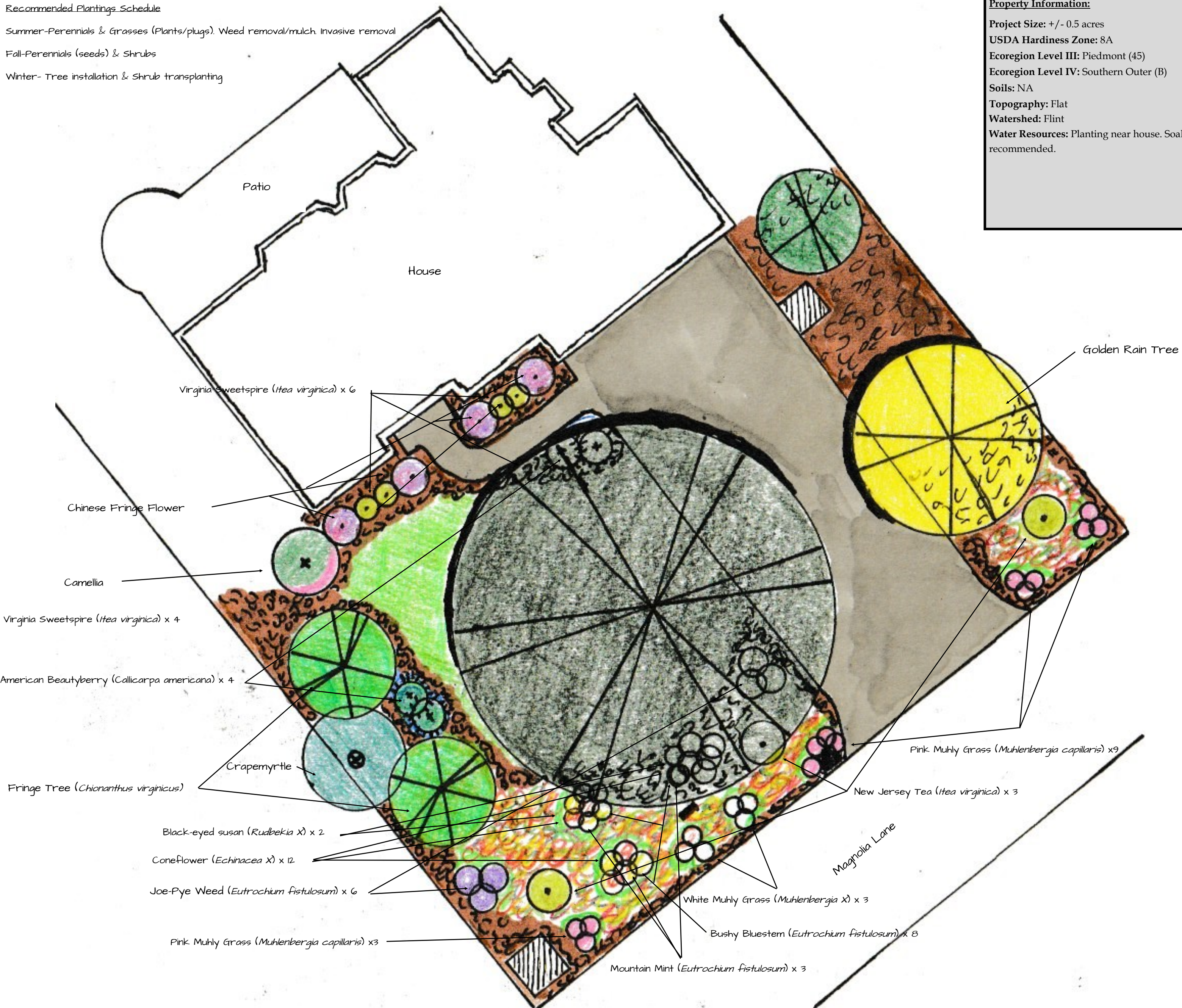
Recommended Plantings Schedule

Summer-Perennials & Grasses (Plants/plugs). Weed removal/mulch. Invasive removal

Fall-Perennials (seeds) & Shrubs

Winter- Tree installation & Shrub transplanting

Property Information:
 Project Size: +/- 0.5 acres
 USDA Hardiness Zone: 8A
 Ecoregion Level III: Piedmont (45)
 Ecoregion Level IV: Southern Outer (B)
 Soils: NA
 Topography: Flat
 Watershed: Flint
 Water Resources: Planting near house. Soaker hoses recommended.



Pink Muhly Grass (*Muhlenbergia capillaris*)
 2-3' tall informal clump forming grass. Masses of tiny pink flowers in fall that last into winter. GA Native.

White Muhly Grass (*Muhlenbergia x*)
 2-3' tall informal clump forming grass. Masses of tiny white flowers in fall that last into winter. GA native.

Black-eyed susan (*Rudbeckia x*)
 2-4' tall perennial wildflower. Yellow blooms. Seeds are eaten by a variety of birds. GA native.

Coneflower (*Echinacea x*)
 2-4' tall perennial wildflower. Seeds are eaten by a variety of birds. Comes in a variety of colors. GA native.

Sunchoke (*Helianthus tuberosus*)
 Yellow flowering native perennial. Spread vigorously. Produces edible tubers.



Joe-Pye Weed (*Eutrochium fistulosum*) x 2
 2'-4' tall with fragrant, showy pink/purple flowers in late summer. Attracts a variety of butterflies. GA native.

Mountain Mint (*Pycnanthemum sp.*)
 Perennial herb up to 6' tall. White flowers. Excellent pollinator plant. GA Native.

Butterfly Weed (*Asclepias tuberosa*)
 1'-2' tall with showy orange flowers. Especially good for monarch butterflies. GA native.

New England Aster (*Eutrochium fistulosum*)
 3'-6' tall with purple flowers that bloom through fall. Southeast native.

Bushy Bluestem (*Eutrochium fistulosum*)
 3'-6' tall clump forming grass. Host for common wood nymph butterfly. GA Native.



Fringe Tree (*Chionanthus virginicus*)
 Deciduous tree/shrub up to 30' tall. Showy clusters of white flowers. GA native.

Southern Sugar Maple (*Acer barbatum*)
 40-60' tall deciduous. Orange/yellowish leaves in fall. Heat tolerant. No common diseases or pest. GA native.

American Beautyberry (*Callicarpa americana*)
 Deciduous fast growing shrub. Can grow up to 10' tall. Produces bluish/purple berries that will last into late fall or until eaten by birds. GA native.

New Jersey Tea (*Ceanothus americana*)
 Deciduous 3-4' shrub with clusters of blooming white flowers in summer. GA native.

Virginia Sweetspire (*Itea virginica*)
 Semi-evergreen 3-5' shrub with clusters of blooming white flowers in late spring. GA native.

Drawn at 20 Scale

